

BRACKET FOR WOODEN CONSTRUCTIONS

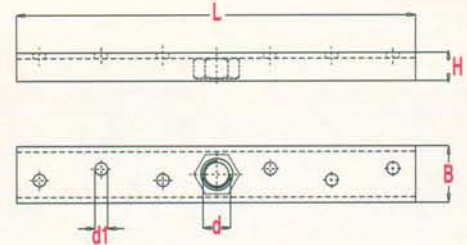
FLANSCH

PLATINE

ΦΛΑΝΤΖΑ ΞΥΛΟΚΑΤΑΣΚΕΥΩΝ



NIKO Profile No.	21.000	23.000	24.000	25.000	26.000	27.000
Bracket for wooden construction No.	21.F00	23.F00	24.F00	25.F00	26.F00	27.F00
Dimension H (mm)	8	11	15	20	25	30
Dimension L (mm)	100	160	210	264	350	500
Dimension B (mm)	20	24	30	38	50	60
Dimension d (mm)	M10	M12	M16	M20	M24	M30
Dimension d1 (mm)	6	5.3	7.3	7.5	11	11



BRACKET FOR STEEL CONSTRUCTIONS

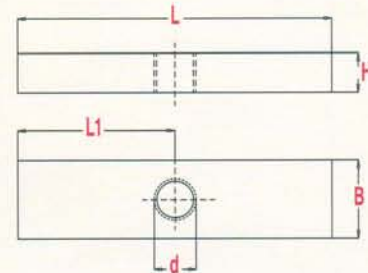
AUFSCHWEISSFLANSCH

PLATINE A SOUDER

ΦΛΑΝΤΖΑ ΣΙΔΗΡΟΚΑΤΑΣΚΕΥΩΝ



NIKO Profile No.	21.000	23.000	24.000	25.000	26.000	27.000
Bracket for steel construction No.	21.F03	23.F03	24.F03	25.F03	26.F03	27.F03
Dimension H (mm)	8	10	15	20	25	30
Dimension L (mm)	100	100	120	140	150	180
Dimension L1 (mm)	50	50	60	70	75	90
Dimension B (mm)	20	30	30	40	50	60
Dimension d (mm)	M10	M12	M16	M20	M24	M30



BRACKET FOR STEEL CONSTRUCTIONS

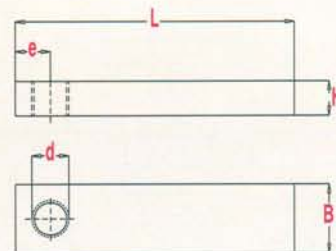
AUFSCHWEISSFLANSCH

PLATINE A SOUDER

ΦΛΑΝΤΖΑ ΣΙΔΗΡΟΚΑΤΑΣΚΕΥΩΝ



NIKO Profile No.	21.000	23.000	24.000	25.000	26.000	27.000
Bracket for steel construction No.	21.F06	23.F06	24.F06	25.F06	26.F06	27.F06
Dimension H (mm)	8	10	15	20	25	30
Dimension L (mm)	100	100	120	140	150	180
Dimension e (mm)	10	12	15	20	20	25
Dimension B (mm)	20	30	30	40	50	60
Dimension d (mm)	M10	M12	M16	M20	M24	M30



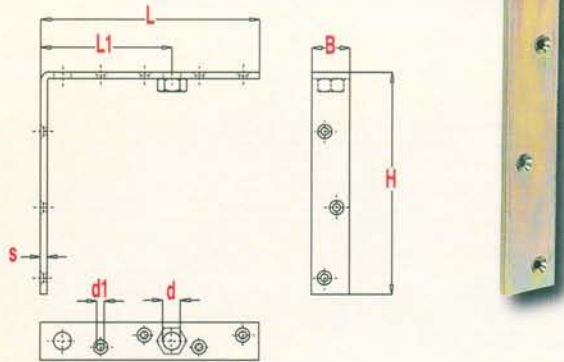
TOP CORNER BRACKET

TRAGWINKEL

EQUERRE AVEC FILETAGE DECALE

ΦΛΑΝΤΖΑ ΓΩΝΙΑΣ

NIKO Profile No.	21.000	23.000	24.000	25.000	26.000
Top corner bracket No.	21.F95	23.F95	24.F95	25.F95	26.F95
Dimension H (mm)	124	158	205	260	320
Dimension L (mm)	124	158	200	255	320
Dimension L1 (mm)	70	80	120	155	160
Dimension B (mm)	20	30	35	40	50
Dimension d (mm)	M10	M12	M16	M20	M24
Dimension d1 (mm)	4.8	5.4	7	8.4	10.5
Dimension s (mm)	4	5	6	8	10



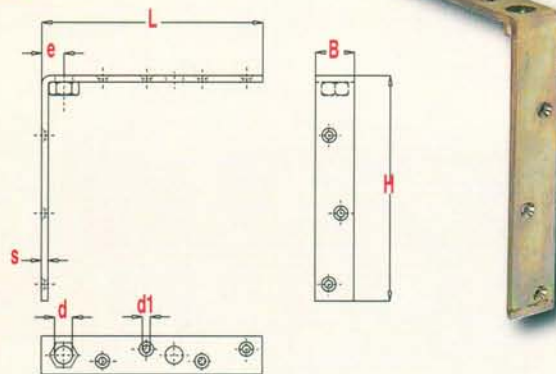
TOP CORNER BRACKET TYPE "A"

TRAGWINKEL AUSFÜHRUNG "A"

EQUERRE AVEC FILETAGE EN BORDURE

ΦΛΑΝΤΖΑ ΓΩΝΙΑΣ ΤΥΠΟΣ "A"

NIKO Profile No.	21.000	23.000	24.000	25.000	26.000
Top corner bracket No.	21.F94	23.F94	24.F94	25.F94	26.F94
Dimension H (mm)	124	158	205	260	320
Dimension L (mm)	124	158	200	255	320
Dimension e (mm)	15	20	20	30	44
Dimension B (mm)	20	30	35	40	50
Dimension d (mm)	M10	M12	M16	M20	M24
Dimension d1 (mm)	4.8	5.4	7	8.4	10.5
Dimension s (mm)	4	5	6	8	10



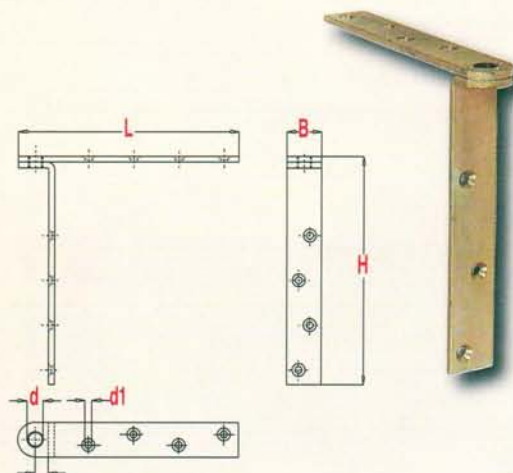
TOP CORNER BRACKET TYPE "C"

TRAGWINKEL AUSFÜHRUNG "C"

EQUERRE FILETAGE EXTERIEUR

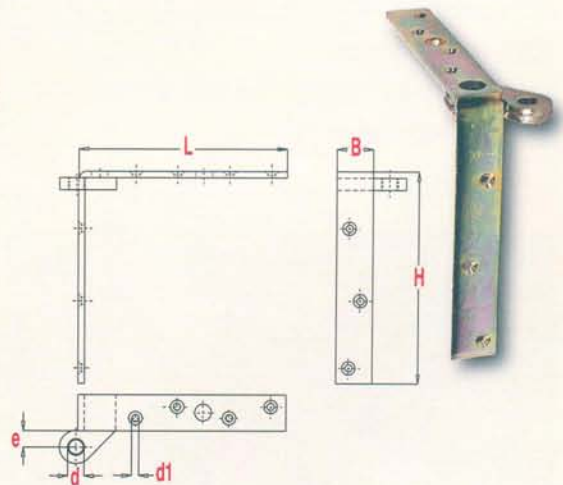
ΦΛΑΝΤΖΑ ΓΩΝΙΑΣ ΤΥΠΟΣ "C"

NIKO Profile No.	21.000	23.000	24.000	25.000	26.000
Top corner bracket No.	21.F96	23.F96	24.F96	25.F96	26.F96
Dimension H (mm)	140	165	230	270	300
Dimension L (mm)	130	160	220	280	320
Dimension e (mm)	7	8	11	14	16
Dimension B (mm)	20	30	35	40	50
Dimension d (mm)	M10	M12	M16	M20	M24
Dimension d1 (mm)	4.8	5.4	7	8.4	10.5



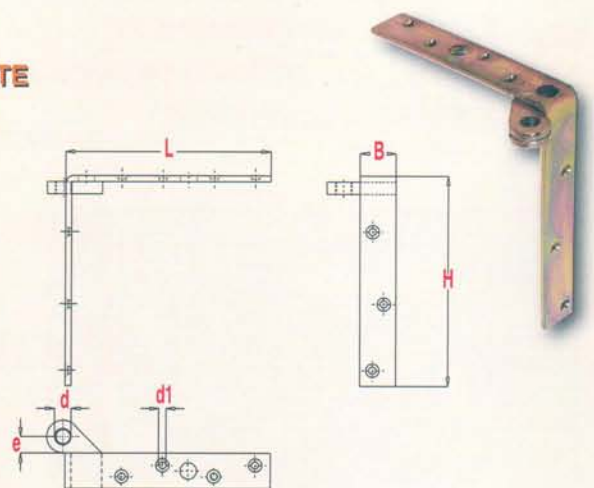
 **TOP CORNER BRACKET TYPE "B" RIGHT**
 **TRAGWINKEL AUSFÜHRUNG "B" RECHTS**
 **EQUERRE DROITE POUR PORTE PLIANTE**
 **ΦΛΑΝΤΖΑ ΓΩΝΙΑΣ ΤΥΠΟΣ "B" ΔΕΞΙΑ**


NIKO Profile No.	21.000	23.000	24.000	25.000	26.000
Top corner bracket RIGHT No.	21.F97	23.F97	24.F97	25.F97	26.F97
Dimension H (mm)	124	158	205	260	320
Dimension L (mm)	124	158	200	255	320
Dimension e (mm)	12	13	16	35	35
Dimension B (mm)	20	30	35	40	50
Dimension d (mm)	M10	M12	M16	M20	M24
Dimension d1 (mm)	4.8	5.4	7	8.4	10.5



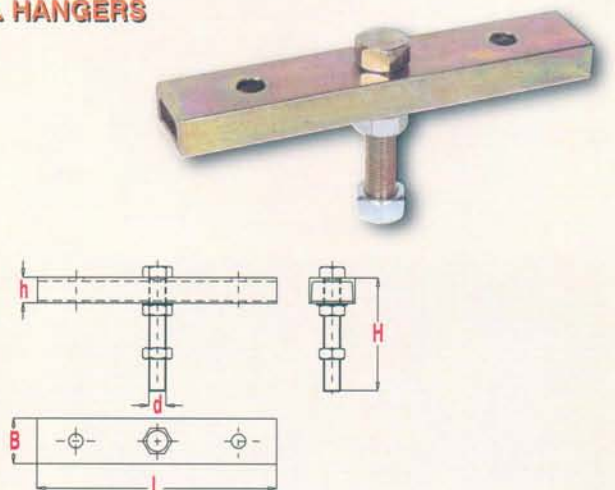
 **TOP CORNER BRACKET TYPE "B" LEFT**
 **TRAGWINKEL AUSFÜHRUNG "B" LINKS**
 **EQUERRE GAUCHE POUR PORTE PLIANTE**
 **ΦΛΑΝΤΖΑ ΓΩΝΙΑΣ ΤΥΠΟΣ "B" ΑΡΙΣΤΕΡΗ**





NIKO Profile No.	21.000	23.000	24.000	25.000	26.000
Top corner bracket LEFT No.	21.F98	23.F98	24.F98	25.F98	26.F98
Dimension H (mm)	124	158	205	260	320
Dimension L (mm)	124	158	200	255	320
Dimension e (mm)	12	13	16	35	35
Dimension B (mm)	20	30	35	40	50
Dimension d (mm)	M10	M12	M16	M20	M24
Dimension d1 (mm)	4.8	5.4	7	8.4	10.5

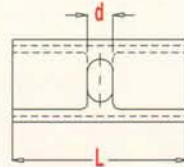
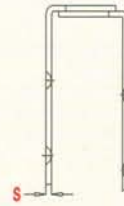
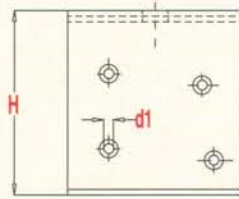


 **TRAVERSE BRACKET FOR TWO WHEEL HANGERS**
 **TRAVERSE**
 **TRAVERSE**
 **ΦΛΑΝΤΖΑ ΤΡΑΒΕΡΣΑΣ ΓΙΑ 2 ΡΑΟΥΛΑ**

NIKO Profile No.	23.000	24.000	25.000	26.000	27.000
Traverse bracket for two wheel hangers No.	23.F19	24.F19	25.F19	26.F19	27.F19
Dimension H (mm)	150	110	180	200	260
Dimension h (mm)	20	30	45	53	53
Dimension L (mm)	220	260	360	420	600
Dimension B (mm)	40	50	80	80	100
Dimension d (mm)	M16	M20	M24	M30	M42



-  **FOLDING PLATE**
-  **VERSTÄRKUNGSLASCHEN**
-  **CHAPE**
-  **ΠΛΑΚΕΣ ΑΝΑΡΤΗΣΕΩΣ**



NIKO SERIES	21.000.	23.000/24.000	25.000/26.000
Folding plate No.	21.F18	24.F18	26.F18
Dimension H (mm)	83	106	160
Dimension L (mm)	50	100	150
Dimension d (mm)	11	17	26
Dimension d1 (mm)	Φ5.3	Φ7	Φ8.5
Dimension s (mm)	3	3	5